

DMS6307W Multi-Sensor IOT Smart Camera



Camera Instruction

- DMS6307W is based on the latest sixth-generation uncooled infrared technology, It is designed for day and night monitoring, intelligent analysis, and active defense. It is composed of thermal imaging module, high-definition visible light module, intelligent analysis module, laser lighting/ranging module, PTZ precision transmission device and control mechanism.
- Replace the human eye with infrared thermal imaging camera and laser camera, replace the human brain with intelligent algorithms and deep learning, and take countermeasures in real time with sound and light rejection, integrating detection, analysis and rejection in one, completely overturning the traditional human and technical defence model.



Camera picture for reference only.

Feature

- All-weather 24 hours work: using multi-mode detection means: intelligent thermal image, high-definition visible light, laser night vision, to achieve day and night all-time, all-weather large-range target rapid search and close detail observation.
- Support image scale, support LRF, support access to multiple sensors.
- Highly intelligent: support hotspots, smoke and fire alarms, temperature detection; support area intrusion detection; support vehicle, boat and human detection, classification and identification; support target tracking, screening and filtering; support AR intelligent information fusion linkage.
- Active defence: support for loud speaker + flashing lights to deter or deny criminals.
- Pitch: -90° to $+90^{\circ}$, horizontal 360° continuous rotation, full coverage of 720° three-dimensional space.
- Horizontal: $0.01^{\circ}/s$ to $100^{\circ}/s$; pitch: $0.01^{\circ}/s$ to $80^{\circ}/s$, high speed start/stop, focal speed adaptive, accurate target positioning.
- Self-diagnosis and self-recovery: supports full life management, fault

self-test, front-end storage, network disconnection renewal, power failure memory, remote restart/upgrade, significantly improving the use experience and reducing the use cost.

- Lightweight design: weight ≤ 10kg, easy to install and maintain.
- The whole machine is made of super strong aluminium alloy and quasi-spherical turntable technology, resistant to strong winds, IP67 protection, rainproof and dustproof, which can adapt to various harsh environments.

Technical Specification

Model	DMS6307W	DMS4307W
Detection	vehicles:6,500m human: 2,500m fire point (@2x2m): 3,000m	
Recognition	Vehicles:1,800m Human: 1,000m	
Thermal imaging Camera	1.Detector: The sixth generation uncooled focal plane array VOx detector 2. Wavelength: 8~14μm 3. NETD: 40mK (@25°C F1.0) 4. Lens: 25-75mm (or Fixed 75mm) 5. Image enhancement: SDE digital image enhancement technology, enhance the details of the image, support 255 thermal image enhancement adjustment 6.Pseudo-color polarity: 16 kinds of pseudo-color images, hot black/hot white 7.Image parameters: AGC automatic gain control, brightness, contrast 8.Electronic zoom: 1.0~8.0×continuous zoom (step length 0.1), support global eagle eye diagram 9. Ranging ruler: support for range finding ruler 10.Dead pixel correction: support the function of dead pixel correction 11.Image correction: support manual correction, background correction, automatic correction time interval, adjustable Gamma correction parameters 12.Strong light protection: support anti-sun damage 13.Non-uniformity correction: automatic/hand	
Resolution	Pixel: 640×512 Field of view: 24°×18°~8°×6°	384×288 Field of view: 14.8°×11°~4.9°×3.7°



Visible Camera	<ol style="list-style-type: none"> 1.Sensor type: back-illuminated ultra-low illumination starlight CMOS 2.Minimum illumination: color: 0.0005Lux @ black and white: 0.0001Lux @ 0Lux (IRON) 3.Lens: 7mm~330mm, 47X optical zoom,16 times digital zoom. 4.Image processing: white balance, electronic shutter, frame accumulation, backlight compensation, glare suppression, 2D/3D digital noise reduction, electronic anti-shake, wide dynamic. 5.Day and night light: 0.4-0.75um visible light wide spectral window and 0.8-0.95um near-infrared spectral window day and night independent double light window, improve the signal-to-noise ratio of imaging light and stray light 6.Support electronic fog penetration and optical fog penetration
Laser illuminator	<ol style="list-style-type: none"> 1.Laser Homogenization: new infrared GHT-III HD flood light source, no scattered particles 2.Laser angle: 3°~65° switchable 3.Laser distance: 300m
Video audio	<ol style="list-style-type: none"> 1.Thermal camera resolution: support 1920×1080; 1280×1024; 1280×960; 1024×768; 1280×720; 704×576; 640×512; 640×480; 400×300; 384×288; 352×288; 352×240 2.Visible camera resolution: 2592×1520; 2560×1440; 1920×1080; 1280×1024; 1280×960; 1024×768; 1280×720; 704×576; 640×512; 640×480; 400×300; 384×288; 352×288; 352×240 3.Video encoding: H.265/H.264/MJPEG, multi-stream support 4.Video code rate:32Kbps~16Mbps 5.Audio encoding:G.711A/ G.711U/G726 6.Image flip: left and right / up and down / diagonal 7.OSD settings: Support OSD display settings for channel name, time, gimbal orientation, field of view, focal length, and preset bit name settings
Intelligent functions	<ol style="list-style-type: none"> 1. Fire detection alarm: threshold 255 levels, target size, number of targets 1-16 can be set, automatically select the most prominent target display, hot spot tracking 2. Intelligent analysis: support intrusion detection, boundary crossing detection, entering/leaving area detection, motion detection, wandering detection, people gathering, fast moving, target tracking, items left behind, items taken; people/vehicle target detection, face detection; and support 16 area settings; support intrusion detection people, vehicle filtering filtering function; support target temperature filtering filtering function 3. Automatic tracking: support single scene tracking/support multi-scene tracking/support panoramic tracking/support alarm linkage tracking 4. Intelligent information fusion: support 512 AR intelligent information fusion, support fire point, intelligent analysis of the recording logo information fusion, support orientation angle, field of view angle, focal length, multiplier information fusion 5.Image fusion: support 18 kinds of double light fusion mode, support picture-in-picture function 6.Alarm management: support for alarm capture and upload



<p>Enhanced Features</p>	<ol style="list-style-type: none"> 1. Distance measurement: support passive distance measurement; support optional laser distance measurement. 2. Support sound and light alarm: internal integrated tweeter + flashing light, support alarm sound customization. 3. Support alarm linkage fire fighting device. 4. Camera diagnostic functions: support disconnection alarm, support IP conflict alarm, support illegal access alarm (illegal access times, lock time can be set), support SD card abnormal alarm (SD space is insufficient, SD card error, no SD card), video masking alarm, anti-sun damage (support threshold, masking time can be set). 5. Whole life management: health index record function, support working time, shutter count, working temperature, limit temperature, etc.; zoom lens and head each motor working cumulative time, etc. 6. Support disconnection renewal. 7. Power failure memory: support can restore the position before power failure, preset point state, cruise state, line sweep state. 8. Remote maintenance: with fault query, self-test, remote restart function; online upgrade, remote upgrade. 9. Key frame setting: support key frame interval 100 levels adjustable. 10. Configuration file: support configuration file import and export function. 11. Web access: support WEB full function configuration, remote online upgrade.
<p>PT</p>	<ol style="list-style-type: none"> 1. Rotation speed: Horizontal: 0.01°/s~100°/s; Pitch: 0.01°/s~80°/s, support focal speed adaption. 2. Rotation angle: horizontal: 360° continuous rotation; pitch: -90°~+90° 3. Structure material: quasi-spherical design of micro-rotary, integrated 5-window multi-channel, fine cast high strength aluminium alloy material. 4. Window glass: infrared/visible high efficiency optical glass, clean film coating. 5. Surface coating: PTA triple anti-corrosion coating, anti-corrosion. 6. Wiper: support intelligent automatic wiper 7. Defrost: visible window defrost 8. Preset position cruise: 3000 preset positions, support 16 cruise routes, each can support 256 preset positions 9. Watch function: preset bit / pattern scan / cruise scan / vertical scan / frame scan / panorama scan / apple skin scan / horizontal fan sweep line scan 10. Support 3D frame selection zoom 11. Orientation information: support angle query/real-time return and positioning; support lens field of view return and positioning 12. Zero point correction: support northward zero point remote correction function
<p>Electrical interface</p>	<ol style="list-style-type: none"> 1. Communication and control: 1 *RJ45 Ethernet port; 2* alarm inputs, 1 *alarm output; 1 *audio input input, 1 *RS485 interface. 2. Protocol: Support HTTP, HTTPS, FTP, SMTP, DNS, NTP, RTSP, RTCP, RTP, TCP, UDP, ICMP, DHCP network protocols; support ONVIF and GB28181 protocols. 3. Development interface: Support HP-SDK secondary development

Enhanced Function	<ol style="list-style-type: none"> 1. Glare protection: support, anti-sun burn function 2. Temperature correction: no thermal image design, imaging resolution is not affected by temperature 3. Scene mode: support multiple configuration scenarios, adapt to no environment application 4. Auto focus tuning: support remote auto focus precision parameter adjustment, adapt to different scenes 5. Day and night cruise: day and night group cruise different preset groups, day cruise 1-40 preset position, night cruise 41-80 preset position, automatically switch day and night according to the photosensitive state, adapt to different time and space scenes 6. Lens servo: support lens preset position, focal length return, focus positioning function 7. Parameter setting: OSD menu remote call operation 8. Remote maintenance: support embedded program remote upgrade for easy after-sales maintenance
Safety control	<ol style="list-style-type: none"> 1. Support illegal access alarm: the number of illegal access, lock time can be set. 2. Support three levels of user rights management, administrator, operator and normal user. 3. Security mode: authorized user name and password, support IP whitelist and blacklist, MAC whitelist and blacklist. 4. User mis-login lockout
Power supply	<ol style="list-style-type: none"> 1. Working voltage: DC 9~36V, external AC220V or battery power adapter 2. Rated power consumption: ≤40W
Environmental adaptation	<ol style="list-style-type: none"> 1. Working temperature: -40℃ ~ 60℃ 2. Working humidity: ≤95% 3. Protection grade: IP67 4. Anti-salt spray: no change in surface after 96 hours of continuous spraying at pH 6.5~7.2 5. Electromagnetic compatibility: anti-surge 6KV, anti-static 8KV contact / 15KV air
Volume weight	<ol style="list-style-type: none"> 1. Weight: ≤10kg 2. Size: 312mm×200mm×296mm (L×W×H) 3. Mounting: Front / side / wall / hanging / vehicle / tripod pro-rack

* The detection distance is related to the object and environment etc. Please contact with us for further information.

Application Environment

DMS6307W is widely used in fire prevention scenarios such as forest and grass fire prevention, fire prevention in tourist attractions and nature reserves, straw burning ban, fire prevention in power transmission lines, chemical parks, oil depots, oil/gas pipelines, environmental protection, etc.; scenarios with key area intrusion alarm monitoring needs such as rivers, lakes, reservoirs, ports, docks, marine fishing grounds, oil fields, urban high points, heritage protection, airport monitoring, highways, railway lines, border and sea defence, bases, etc.; and mobile monitoring application scenarios such as vehicle-mounted, ship-mounted.

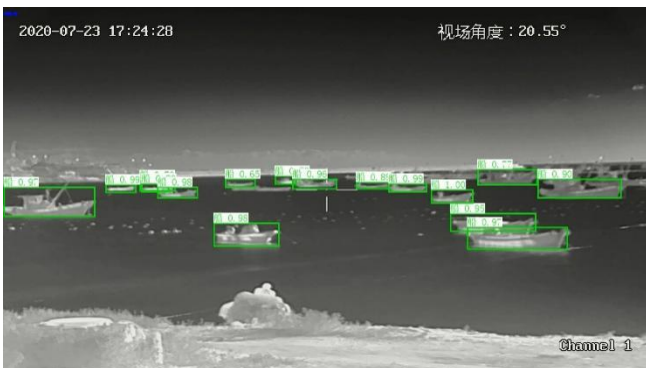




Perimeter prevention



Human vehicle classification identification



Ship identification



Multi-target recognition/ranging of people, vehicles and animals



Auto tracking



Port

Marine Surveillance



Oilfield



Environmental protection - poaching

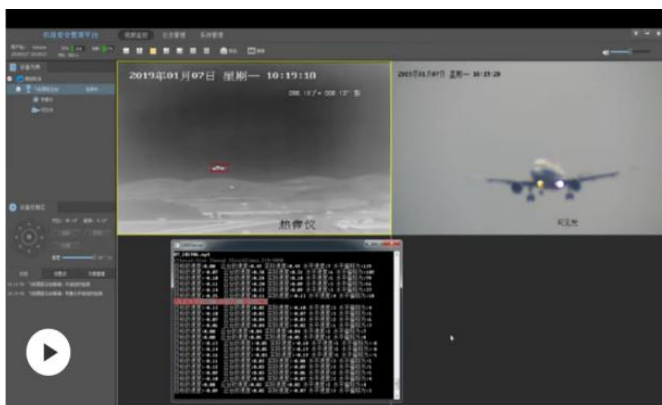
Environmental

LASER & THERMAL CAMERAS / 100M-15KM IN TOTAL DARKNESS



Contact: Walter Mob/WhatsApp 0086 18615318036 Email: walter@argustec.com

protection - Sneaky emissions



Airport



Highway

