

Milesight AI Box



Equipped with numerous algorithms for deep learning and analysis, the AI Box is a cost-effective AI computing product, which is able to recognize detected objects precisely and immediately. Therefore, the AI Box is a solution platform for the creation of deep learning capable of realizing AI applications, such as Face Recognition, Human-Vehicle Control and Perimeter Alert, etc.



DATASHEET

KEY FEATURES

Scalability of Connectivity

- Fully integrate with Milesight network cameras and 3rd party network cameras.
- Support H.265/H.264, offering better compression and substantially improving video quality.

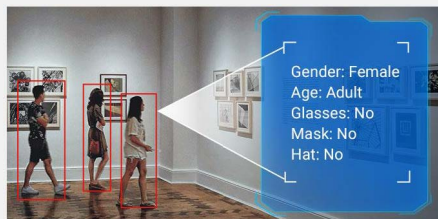
Ease of Use

- Compatible with existing Milesight VMS system, meets the need for optimally and purposefully expanded and upgraded.
- Centralized management of diverse attributes at Milesight VMS Enterprise.
- HTML5 Web-based configuration.
- Easy configuration and quick system start-up.

Intelligent Applications

Clientele Classification & Identity Management

Face-human & Recognition, Structure Analysis, such as Face, Body and Vehicle, etc.



Perimeter Alert Management

Tripwire, Intrusion, Park, Exit, Wander and Over Wall Detection.



Behavioral Alert Management

Fall, Smoke, Call, Watch Phone, Run, Sleep Detection, etc.



Over-crowd Management

Regional People Counting, Entrance & Exit People Counting.



Objects Management

Sundry Detect, Goods Forget, Goods Guard.





| Model | BX108-A |
|---|--|
| System Parameters | |
| Main Processor | High-performance embedded microprocessors |
| Operating System | Embedded Linux |
| Device Access | |
| Video Stream Input | Video Resolution: 1920 x 1080 (1080P), 2560 x 1440 (4MP), 3840 x 2160 (8MP) |
| Video Decoding Type | H.264/H.265 |
| Smart Functions | |
| Working mode: multi-algorithm parallel, configurable by channel | <ul style="list-style-type: none"> ● Face-Human & Recognition: (full load maximum 8 channels): face capture, face recognition, face attributes, human body capture, human attributes, face-human binding. ● Structure Analysis: (full load max 8 channels): Image capture: face, human body, motor vehicle, non-motor vehicle Attribute output: face, human body, motor vehicle, non-motor vehicle Association relationship: face-person binding, person-non-motor vehicle binding ● Diagnosis_Alarm: (full load maximum 8 channels): Image_Cover_Alert ● Perimeter_Alarm (fully loaded 8 channels, 4 sub-rules per channel): Park, Exit, Wander, Over_Wall, Intrusion, Tripwire, Climb ● Behavioral_Alarm (fully loaded 8 channels, 4 sub-rules per channel): Fall, Smoke, Call, Watch Phone, Run, Sleep, On/Off Duty, Gather, Fight, Person_Over, Person_Less, Hold_Weapon ● Goods_Alarm (fully loaded 8 channels, 2 sub-rules per channel): Sundry_Stack, Goods_Guard, Goods_Forget ● Headcount_Alarm (fully loaded 8 channels, 2 sub-rules per channel): Head_Count, Cross_Line <p>Note: Functional compatibility of AI Box with Milesight VMS Enterprise depends on the specific version implementation.</p> |
| Report | Support face capture, face recognition, face attributes, human body, motor vehicle, non-motor vehicle attributes, and alert alarm analysis results reporting. |
| Accuracy | Face: face capture rate $\geq 99\%$, false capture rate $< 1\%$, recognition pass rate: $>99.5\%$, recognition false rate: $< 0.5\%$. Human body: human body capture rate $\geq 95\%$, false catch rate $< 1\%$. Motor vehicle: motor vehicle capture rate $\geq 90\%$, false catch rate $< 1\%$. Non-motor vehicle: non-motor vehicle capture rate $\geq 95\%$, false catch rate $< 1\%$. |
| Interface Parameters | |
| Network Interface | 2, 100M/1000M adaptive Ethernet, RJ45 interface |
| Alarm Input Interface | 4-way switch |
| Alarm Output Interface | 4-way switch |
| Audio Output | 1-way |
| Audio Input | 1-way |
| Front USB Interface | 1 x USB 2.0 and 1 x USB 3.0 |
| Rear USB Interface | 2 x USB 2.0 |



| | |
|-----------------------------------|--|
| RS485 | 2-way |
| Reset Button | 1 |
| Power Indicator (PWR). | 1 |
| Run Indicator (RUN). | 1 |
| System capabilities | |
| Face Recognition | Employee passage at the entrance; List control and identification of key personnel, alarm, stranger identification, etc. Face library capacity: 64 face libraries, total 300,000 face pictures. |
| Video Structured | Capture of face, human body, motor vehicle and non-motor vehicle, etc., attribute analysis. |
| Network Protocols | TCP/UDP/HTTP/MULTICAST/DHCP/FTP/NTP/HTTPS/RTSP, etc. |
| Dual Network Ports | Supports three modes: multiple access setting, load balancing, and primary/standby mode. |
| Log Queries | It can query, search and display the capture information of face, human body, motor vehicle and non-motor vehicle. |
| Environmental requirements | |
| Operating Temperature | -30°C ~ +70°C |
| Storage Temperature | -30°C ~ +70°C |
| Relative Humidity | 10% ~ 90%RH, non-condensing |
| Other | |
| Power Supply | DC12V±10%, 3.33A |
| Structure | Metal chassis |
| Dimensions (L/D) | 229×193×49 (mm) |
| Weight | 1.96Kg |
| Warranty | 1-year NBD (Next Business Day) with onsite parts delivery service. |

Rule Setting

| Algorithm Pocket | Algorithm Pockets Management | | | | | | |
|------------------|------------------------------|-----------|-----------|---|---|---|---------------------------|
| | Face-Human | Diagnosis | Structure | Perimeter | Behavior | Goods | Headcount |
| BX108-A | 8*1 | 8*1 | 8*1 | 8*4 sub-rules | 8*4 sub-rules | 8*2 sub-rules | 8*2 sub-rules |
| Sub-rules | - | - | - | Park, Exit, Wander, Over_Wall, Intrusion, Tripwire, Climb | Fall, Smoke, Call, Watch Phone, Run, Sleep, On/Off Duty, Gather, Fight, Person_Over, Person_Less, Hold_Weapon | Sundry_Stack, Goods_Guard, Goods_Forget | Head_Count, Cross_Line |

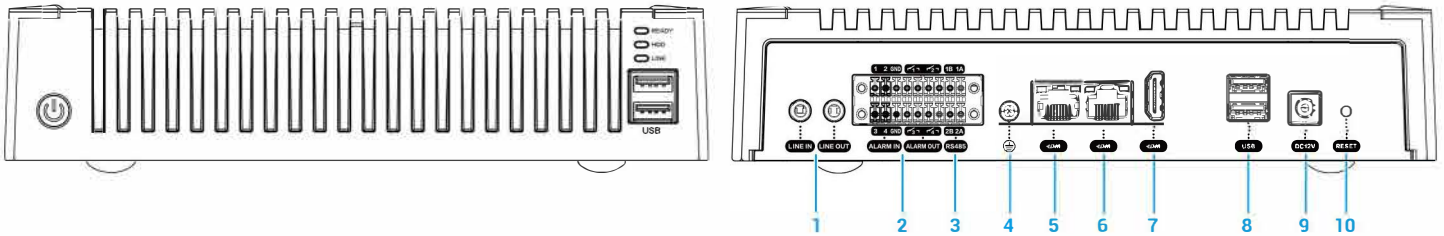
Note:

- ① One AI Box supports up to 8 algorithm pockets for stacked use at the same time.
- ② Each channel supports overlaying 4 different algorithm pockets, but does not support simultaneous deployment of "Face-Human & Recognition" and "Structure_Analysis" algorithms. For example, if users choose channel 1 to open four algorithm pockets at the same time, Structure_Analysis, Perimeter_Alarm(with 4 sub-rules), Behavioral_Alarm(with 4 sub-rules), and Headcount_Alarm(with 2 sub-rules), and channel 2 to open the above four algorithm pockets at the same time, at which time the AI Box's computing power is full.



Interfaces

BX108-A



- | | |
|-------------------------------|-----------|
| 1. Audio input and output | 6. WAN |
| 2. Alarm input and output | 7. HDMI |
| 3. RS485 | 8. USB |
| 4. Grounding connection cable | 9. Power |
| 5. LAN | 10. Reset |

Device Connection Topology

